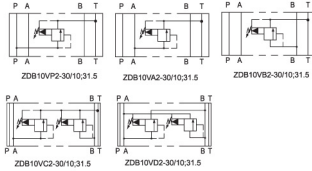


## ZDB10/Z2DB10 型叠加式溢流阀 Modular relief valves



符号 Symbol



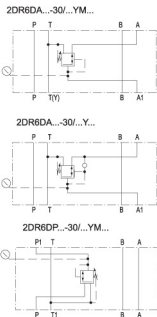
### 规格说明 Specification

流量 Flow (L/min)	100
工作压力 Working pressure (MPa)	31.5
设定压力 Setting pressure (MPa)	10 或 31.5
液压油 Hydraulic oil	矿物油、磷酸酯 Mineral oil, Phosphate ester
油温范围 Temperature range (°C)	-20...+80
粘度 Viscosity (mm <sup>2</sup> /s)	10 ~ 380
重量 Weight ZDB 10...(kg)	2.4
Z2DB 10...(kg)	2.6

## ZDR6D 型叠加式减压阀 Modular reducing valves



符号 Symbol



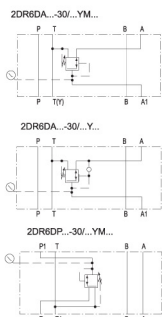
### 选购指南 How to order

Z	DR	6	D	-	2	30
系列号 Series	减压阀 Reducing valve	6 通路 Size	直动式 Direct type	A 腔减压 =A A port reducing P 腔减压 =P P port reducing	旋钮 =1 Rotary knob 带护罩的调节螺栓 =2 Sleeve with hexagon and protective cap 带刻度有锁旋钮 =3 Lockable rotary knob with scable	30 系列 =30 (30-39 系列内部结构和连接尺寸相同) Unchanged installation and connection dimensions
2.5					M	*
2.5= 最大的次级压力为 2.5MPa Max.secondary pressure			控制油内控外泄 Pilot oil supply internal	无标记 = 带单向阀 None=With check valve (只用于 A 腔减压的) Only for port A reducing	无代号 = 矿物油 None=Mineral oil V= 磷酸酯油 Phosphate-ester	其它细节用文字说明 Further detail in clear text
7.5= 最大的次级压力为 7.5MPa Max.secondary pressure			pilot oil drain external	M= 不带单向阀 Without check valve		
15= 最大的次级压力为 15MPa Max.secondary pressure						
21= 最大的次级压力为 21MPa Max.secondary pressure						

## ZDR10D 型叠加式减压阀 Modular reducing valves



符号 Symbol



### 选购指南 How to order

Z	DR	10	D	-	2	30
系列号 Series	减压阀 Reducing valve	10 通路 Size	直动式 Direct type	A 腔减压 =A A port reducing P 腔减压 =P P port reducing	旋钮 =1 Rotary knob 带护罩的调节螺栓 =2 Sleeve with hexagon and protective cap 带刻度有锁旋钮 =3 Lockable rotary knob with scable	30 系列 =30 (30-39 系列内部结构和连接尺寸相同) Unchanged installation and connection dimensions
2.5					M	*
2.5= 最大的次级压力为 2.5MPa Max.secondary pressure			控制油内控外泄 Pilot oil supply internal	无标记 = 带单向阀 None=With check valve (只用于 A 腔减压的)Only for port A reducing	无代号 = 矿物油 None=Mineral oil V= 磷酸酯油 Phosphate-ester	其它细节用文字说明 Further detail in clear text
7.5= 最大的次级压力为 7.5MPa Max.secondary pressure			pilot oil drain external	M= 不带单向阀 Without check valve		
15= 最大的次级压力为 15MPa Max.secondary pressure						
21= 最大的次级压力为 21MPa Max.secondary pressure						