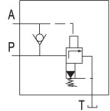


# DA/DAW 型先导式卸荷阀 Pressure shut-off valves, pilot operated

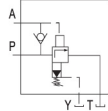


## ■ 选购指南 How to order

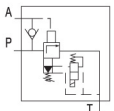
### 符号 Symbol



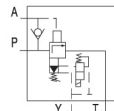
DA...-30/...



DA...-30/...Y...



DAW...-30/...



DAW...-30/...Y...

DA	-	10	A	1	30	8
系列号 Series	不带电磁阀 = 无标记 None=Without solenoid valve 带电磁阀 =W With solenoid valve	通径 Size 10=10 25=20 32=30	电磁阀: solenoid valve 常闭式 =A Normally closed 常开式 =B Normally open	旋钮 =1 Rotary knob 带护罩的调节螺栓 =2 Sleeve with hexagon and protective cap 带刻度有锁旋钮 =3 Lockable rotary knob with scable	30 系列 =30 (30 ~ 39 系列内部结 构和连接尺寸相同) Unchanged installation and connection dimensions	压力调整范围 Pressure adjusting range 2-8MPa=8 8-16MPa=16 16-31.5MPa=31.5

Y	-	-	-	-	*
无标记 = 控制油内排 None=Pilot oil drain internal Y= 控制油外排 Pilot oil drain external	G24=DC 24V W220-50=AC 220V; 50Hz W220R= 交流本整型 220V Plug rectification	无标记 = 没有 故障检查按钮 None= Without knob N= 有故障检 查按钮 With knob	Z4= 方型插头 Plug in connector Z5L= 带灯方型插 头 Plug in connector with lamp	无代号 = 矿物油 None=Mineral oil V= 磷酸酯油 Phosphate-ester	其它细节 用文字说 明 Further detail in clear text