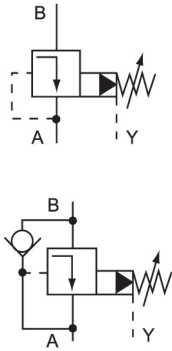


DR 型 5X 先导式减压阀 Pressure reducing valves, pilot operated

■ 选购指南 How to order



符号 Symbol



DR	-	-	-	-	5X
系列号 Series	先导式溢流阀 = 无标记 Pilot operated relief valve 先导阀 =C (无主阀芯插件, 不标通径) Pilot valve without main spool assembly (do not enter norm.size) 带主阀芯插件先导阀 =C Pilot valve with main spool assembly (注明通径 30) Size 30	连接方式 Connection 底板安装 螺纹连接 Sub-plate Thread =None 螺纹连接 =G Thread	底板安装 = 无标记 =None 螺纹连接 =G Thread	旋钮 =4 Rotary knob 带护罩的调节螺栓 =5 Sleeve with hexagon and protective cap 带刻度有锁旋钮 =6 Lockable rotary knob with scable 带刻度旋钮 =7 Rotary knob with scable	系列 50-59 =5X
	通径 Size	10 15 20 25 32	=10 =15 =20 =25 =30		
			注明 Note		

-	Y	-	-	-	*
5= 设定压力至 5MPa 5= Setting pressure up to 5MPa 10= 设定压力至 10MPa 10= Setting pressure up to 10MPa 20= 设定压力至 20MPa 20= Setting pressure up to 20MPa 31.5= 设定压力至 31.5 MPa 31.5= Setting pressure up to 31.5 MPa 35= 设定压力至 35MPa 35= Setting pressure up to 35MPa	Y= 控制油 内供外排 Pilot oil supply internal pilot oil drain external	无标记 = 带单向阀 (仅对板式安装) None=With check valve (only for sub-plate type) M= 不带单向阀 Without check valve	无标记 = 英 制螺纹 None=British 2= 公制螺纹 Metric	无代号 = 矿物 油 None=Mineral oil V= 磷酸酯油 Phosphate- ester	其它细节 用文字说 明 Further detail in clear text