

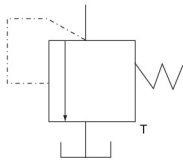
DBD 型直动溢流阀 Pressure relief valves, direct operated



■ 选购指南 How to order

DBD	-	G						-
系列号 Series	带保护罩的调节螺栓=S Grub screw with hexagon and protective cap 调节手柄=H Rotary knob 带锁的调节手柄(保用于通径 6.8 和 10)=A Lockable rotary knob(size 6.8 and 10)	连接方式 Connection		G	K	P	连接方式 Connection	
		G1/4	M14 × 1.5	6	6	6	插装式=K Cartridge	
		G3/8	M18 × 1.5	8	-	-	螺纹连接=G Thread	
		通径 Size	G1/2	M22 × 1.5	10	10	10	板 式 安 装 =P Sub-plate
			G3/4	M27 × 2	15	-	-	
			G1	M33 × 2	20	20	20	
			G1 1/4	M42 × 2	25	-	-	
			G1 1/2	M48 × 2	30	30	30	

符号 Symbol



10	G			-	-	*	
系列数 10=10 系列 (10 ~ 19 系列内部结构和连接尺寸相同) Unchanged installation and connection dimensions	压力级 Pres- sure degree	NG 10 2.5MPa 5MPa 10MPa 20MPa 31.5MPa 40MPa 63MPa	NG 6-20 2.5MPa 5MPa 10MPa 20MPa 31.5MPa 40MPa	NG 25-30 2.5MPa 5MPa 10MPa 20MPa 31.5MPa	英制 = 无标记 None= British 2= 公制 Metric	工作介质 Working medium 无代号 = 矿物油 None=Mineral oil V= 磷酸酯油 V=Phosphate- ester	其它细节 用文字说明 Further detail in clear text

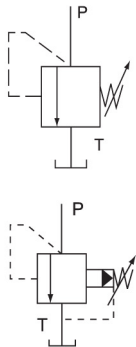
DBT/DBWT 型遥控溢流阀 Pressure remote relief valves



■ 选购指南 How to order

DB	-	-	-	10	-
系列号 Series	不带电磁换向阀 = 无标记 Without solenoid valve 带电电磁换向阀 =W With solenoid valve	常闭=A Normally closed 常开=B Normally open	手柄=1 Rotary knob 带保护罩的内六角调节螺 栓=2 Sleeve with hexagon and protective cap 带锁手柄=3 Lockable rotary knob	30 系列 =30 (30 ~ 39 系列安装 及连接尺寸不变) Unchanged installation and connection dimensions	调节压力至 10MPa=10 Settable pressure up to 10MPa 调节压力至 31.5MPa=31.5 Settable pressure up to 31.5MPa

符号 Symbol

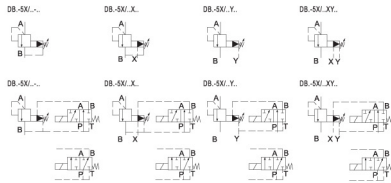


-	-	-	-	-	*
W220-50=AC 220V50Hz G24=DC 24V W220R= 本整电磁铁 交流 220V Plug rectification	无标记 = 不带 故障检查按钮 Without hand override N= 带故障检 查按钮 With hand override	Z4= 小型插头 Plug in connector Z5= 大型插头 Large plug in connector Z5L= 带指示灯的插头 Plug in connector with pilot lamp	无标记 = 英制 None=British Y, G1/4" 2= 公制 Metric Y, M14 x 1.5	无代号 = 矿物油 None=Mineral oil V= 磷酸酯油 V=Phosphate- ester	其它细节用 文字说明 Further detail in clear text

DB/DBW 型 5X 先导式溢流阀 Pressure relief valves, pilot operated



■ 选购指南 How to order



DB	-	-	-	-	-	-	-	-	
系列号 Series	不带电磁 换向阀 = 无标记 Without solenoid valve	先导式溢流阀 = 无标记 Pilot operated relief valve 先导阀 =C (无主阀芯插件, 不标通径) Pilot valve without main spool assembly (do not enter norm.size)	10 15 20 25 32	连接方式 Connection 底板安装 螺纹连接 Plate Thread 注明 Note	=10 =15 =20 =25 =30	=10 =15 =20 =25 =30	常闭 =A Norm. closed 常开 =B Norm. open	底板安装 = 无标记 None= Sub- plate 螺纹连接 =G Thread	旋钮 =1 Rotary knob 带护罩的调节螺栓 =2 Sleeve with hexagon and protective cap 带刻度有锁旋钮 =3 Lockable rotary knob with scable 带刻度旋钮 =7 Rotary knob with scable
With solenoid valve	带主阀芯插件先导阀 =C Pilot valve with main spool assembly (注明通径 10 或 30)Size 10 or 30								

5X	-	-	-	-	-	-	-	-	-	-
系列 50-59 =5X	5= 设定压力至 5MPa 5= Setting pressure up to 5MPa 10= 设定压力至 10MPa 10= Setting pressure up to 10MPa 20= 设定压力至 20MPa 20= Setting pressure up to 20MPa 31.5= 设定压力至 31.5 MPa 31.5= Setting pressure up to 31.5 MPa 35= 设定压力至 35MPa 35= Setting pressure up to 35MPa	控制油供排型式 无标记 = 内供内排 Pilot oil supply internal pilot oil drain internal X= 外供内排 Pilot oil supply external pilot oil drain internal Y= 内供外排 Pilot oil supply internal pilot oil drain external XY= 外供外排 Pilot oil supply external pilot oil drain external	无标记 = 标准型 Standard U= 较低开启 压力(不用于 无主阀芯插 件型)Lower opening pressure (unsuitable without spool assembly)	无标记 = 无切 换时间延迟 No changed time relay S= 有切换时 间延迟(仅 DBW 型) With changed time relay (only for DBW type)	G24=DC 24V W220- 50=AC 220V, 50Hz	无标记 = 电 磁阀无手动 应急 Solenoid valve without manual knob N= 电磁阀 有手动应急 Solenoid valve with manual knob	Z4= 电磁 阀方型插 头 Plug in connector Z5L= 电磁 阀方型插 头带灯 Plug in connector with pilot lamp	R12= 电 磁阀 B 口 中节流孔 直径 1.2mm Orifctce φ 1.2mm inport B of the solenoid valve	无标记 = 英制螺 纹 None= British 2= 公制 螺纹 Metric	无代号 = 矿物油 None= Mineral oil V= 磷酸 酯油 Phos- phate- ester