

## TMJ23.6W52.7-3570 行走装置 Walk motor unit



本产品为马达与减速机集成一体的行走装置独特的减速机构实现了小型轻量化，丰富的经验确保了高可靠性。马达内置安全阀、背压阀、停车制动器。具有传动比范围大、结构紧凑、体积小、重量轻、安装方便；传动效率高，运动平稳，噪音低；同时具有良好的安全保护，使用寿命长等优点。适用于开式液压系统，广泛应用于3.5~4吨液压挖掘机的行走装置。

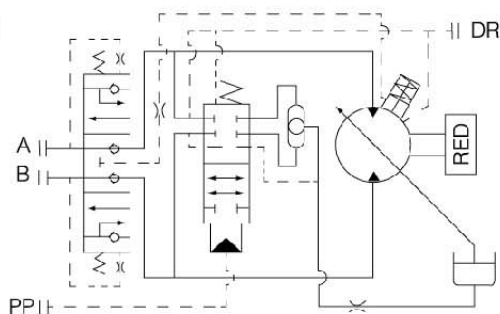
This product is the mobile device incorporating motor and reducing machine into an organic whole, compact size has realized small-scale light quantization. high performance design variety of products suitable for all kinds of construction machinery. Built-in the arrester, There is be transmisson than in range the heavy, structure compactness, the small, light, to install is efficiency, movement are steady, the noise is low; Have good safe protection at the same time can bear higher load, have long performance life grade advantage. Suitable for the open type hydraulic pressure system. widely apply to the hydraulic excavator equipment of 3.5~4 ton.

### 技术参数 Technical date

排量	Displacement	23.6/14.2ml/r
额定进口压力	Rated inlet pressure	21MPa
最高进口压力	Peak inlet pressure	24.5MPa
减速机转速	Speed of walk motor unit	35.4/58.3r/min
马达输出转速	Output speed of motor	1868/3074r/min
旋转方向	Rotate direction	双向Alternating
最大流量	Max flow	45L/min
最大输出扭矩	Max output torque	3570N.m
制动力矩	Brake torque	27.5N.m
双速切换压力	Swith pressure	1.5MPa
减速比	Ratio	1/52.73
油温范围	Oil temperature range	-20℃~+80℃
最佳工作粘度	Optimum operating viscosity	16~25mm²/s
近似重量	Weight(approx.)	43kg

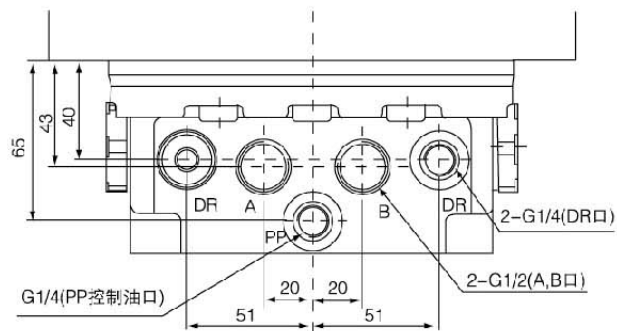
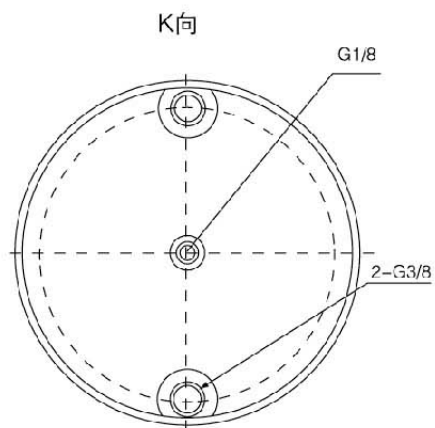
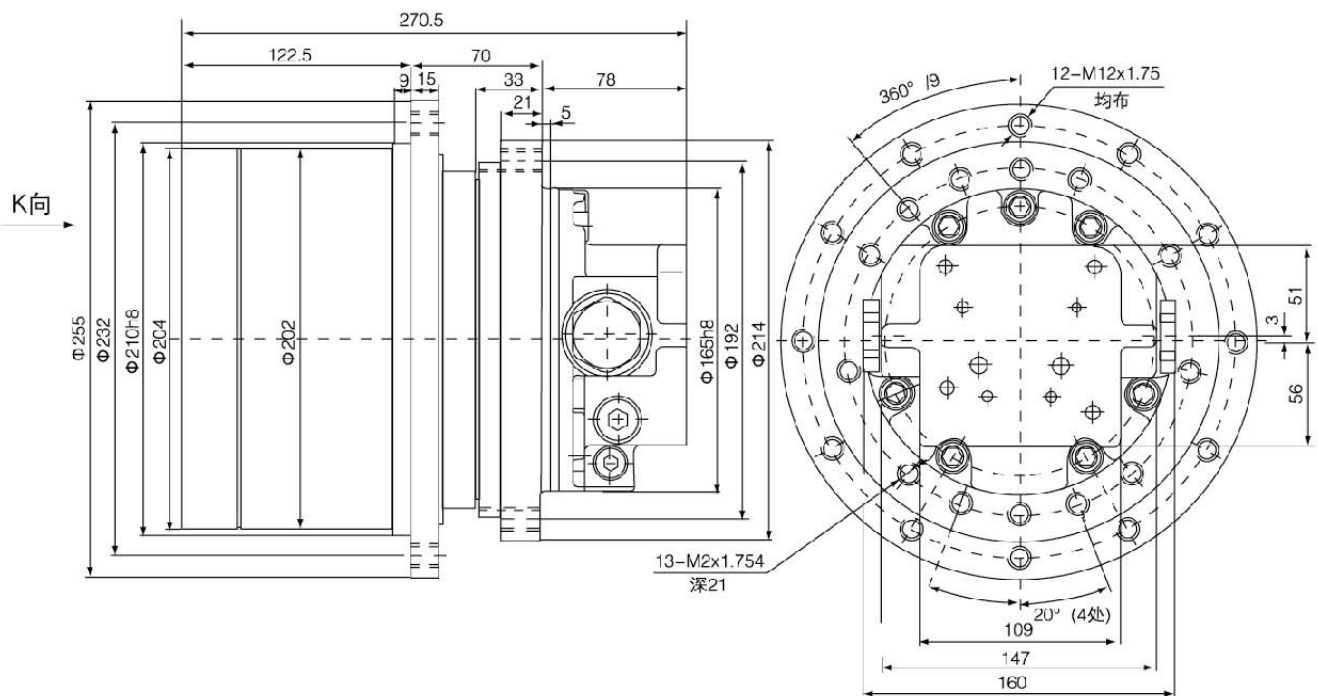
### 液压原理图

Hydraulic theory picture



A、B 进出油口 Service ports  
DR 回油口 Case drain port  
PP 控制油口 Constant port

■ 安装图 Mounting Dimension



A、B	进出油口	Service ports
DR	回油口	Case drain port
PP	控制油口	Constant port